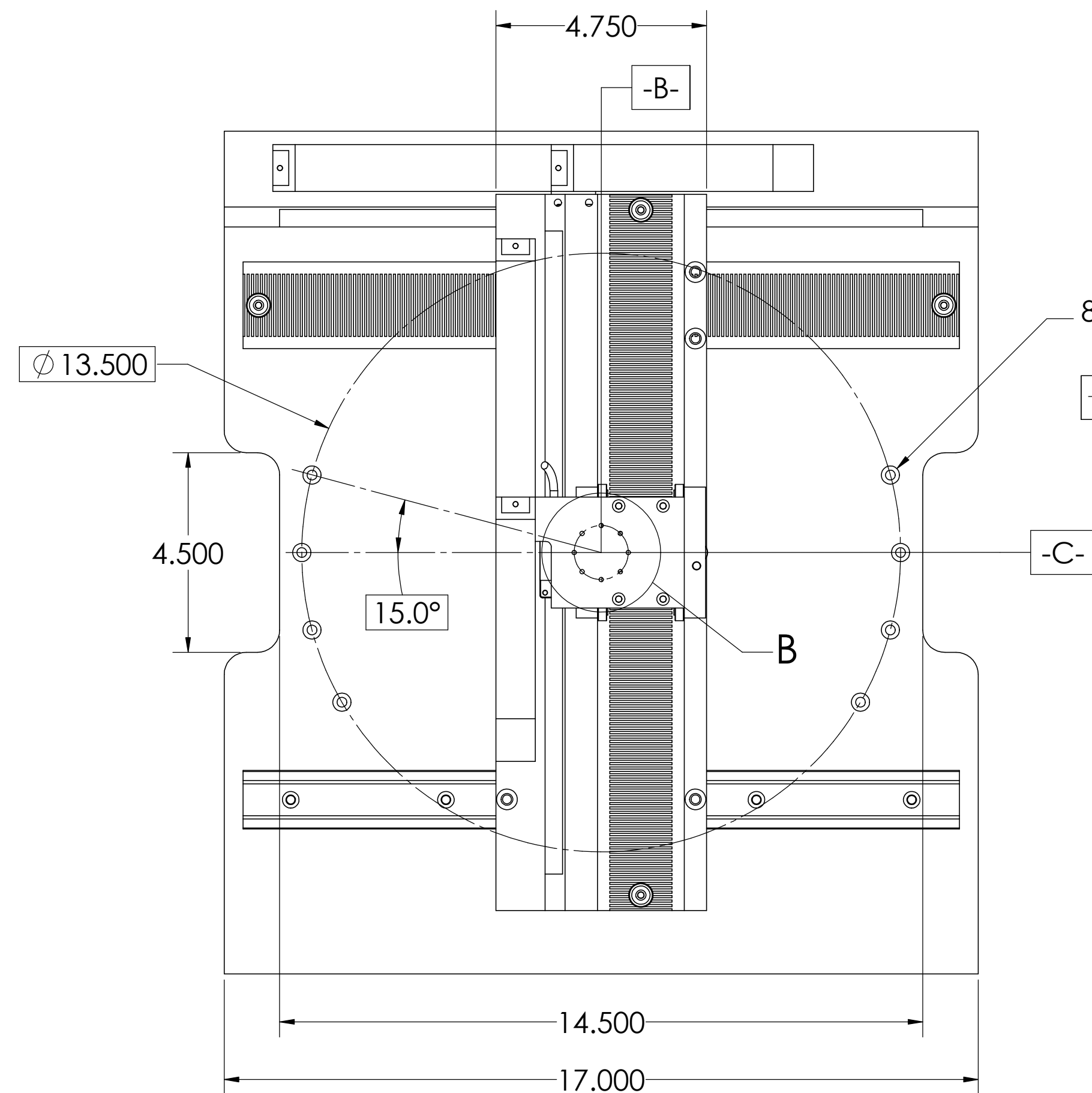
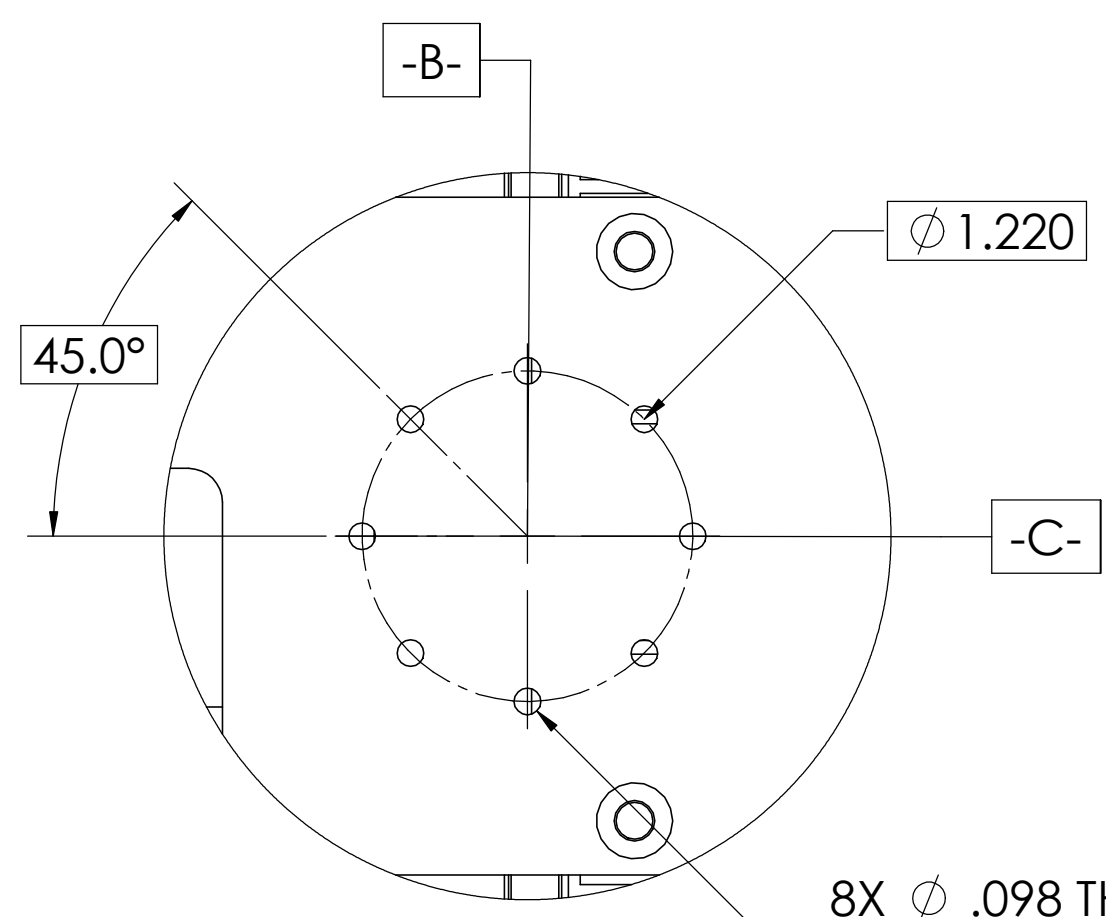
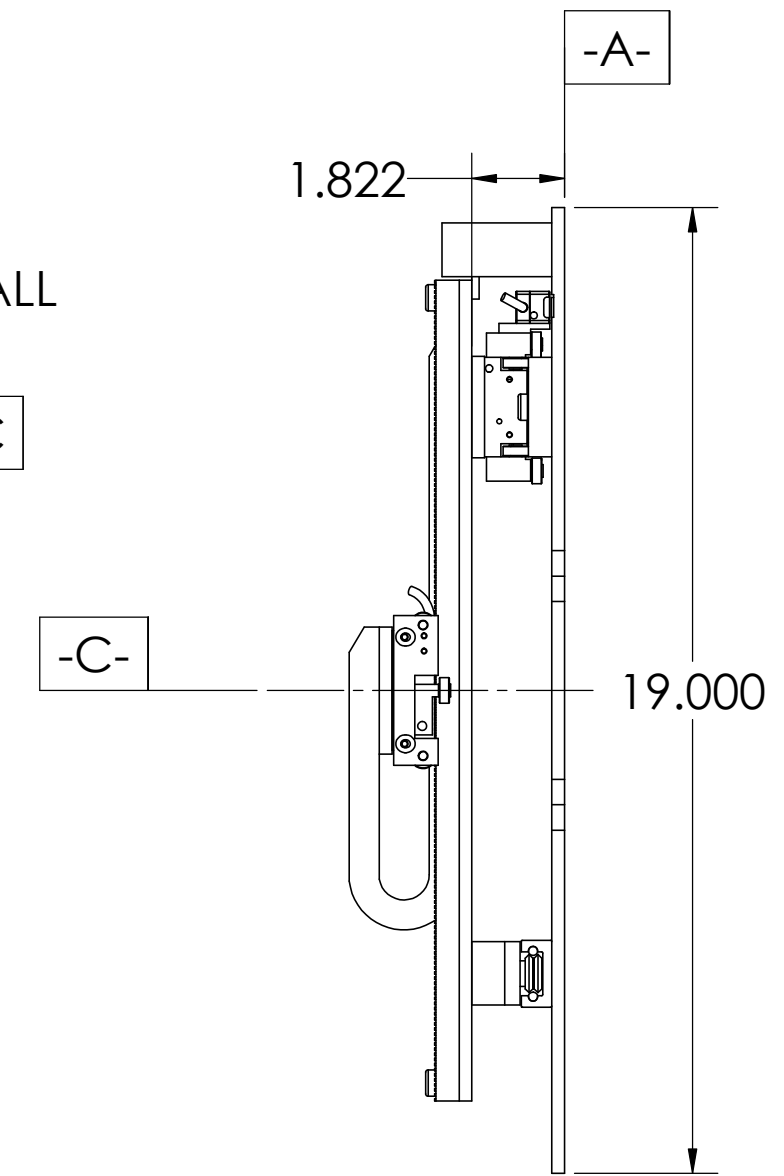


These drawings and specifications are the property of H2W Technologies, Inc. They are issued in confidence and shall not be reproduced, copied, or used without written permission from H2W Technologies, Inc.

REVISION TABLE					
REV	ECN#	DESCRIPTION	REV BY	APPROVED	DATE
---	---	Original Drawing	SDC	MPW	2-2-16

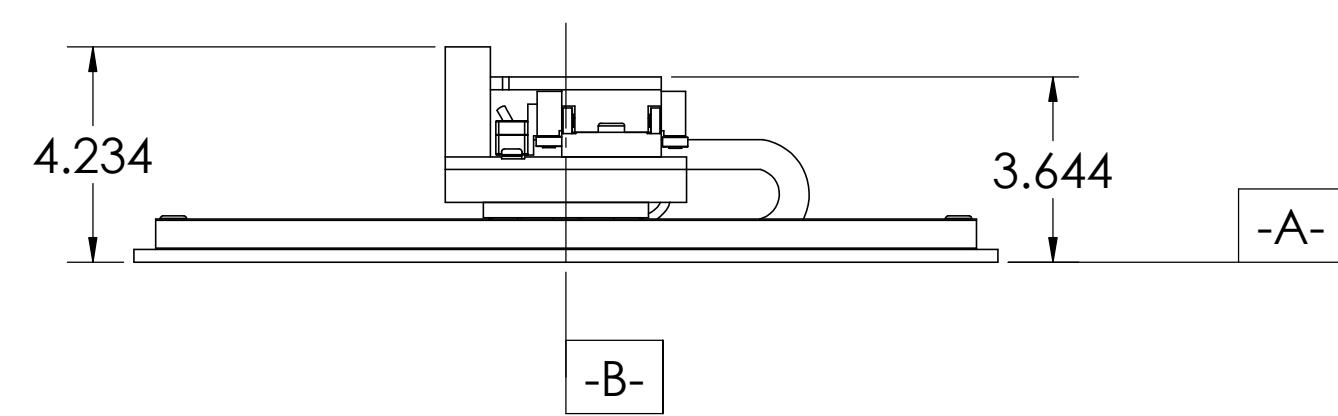


8X $\phi .221^{+.006}_{-.001}$ THRU ALL
 $\checkmark \phi .411 \times 82^\circ$
 $\oplus \phi .005 \text{ (M) A B C}$

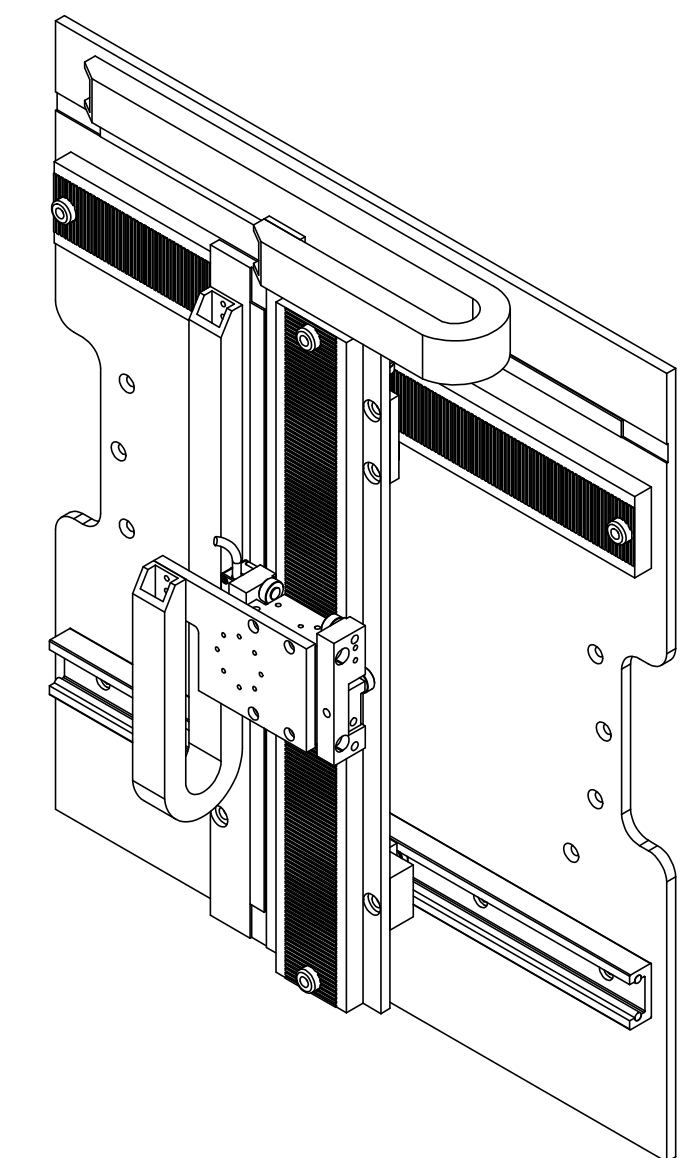


8X $\phi .098$ THRU ALL
 M3X0.5 - 6H THRU ALL
 $\oplus \phi .005 \text{ (M) A B C}$

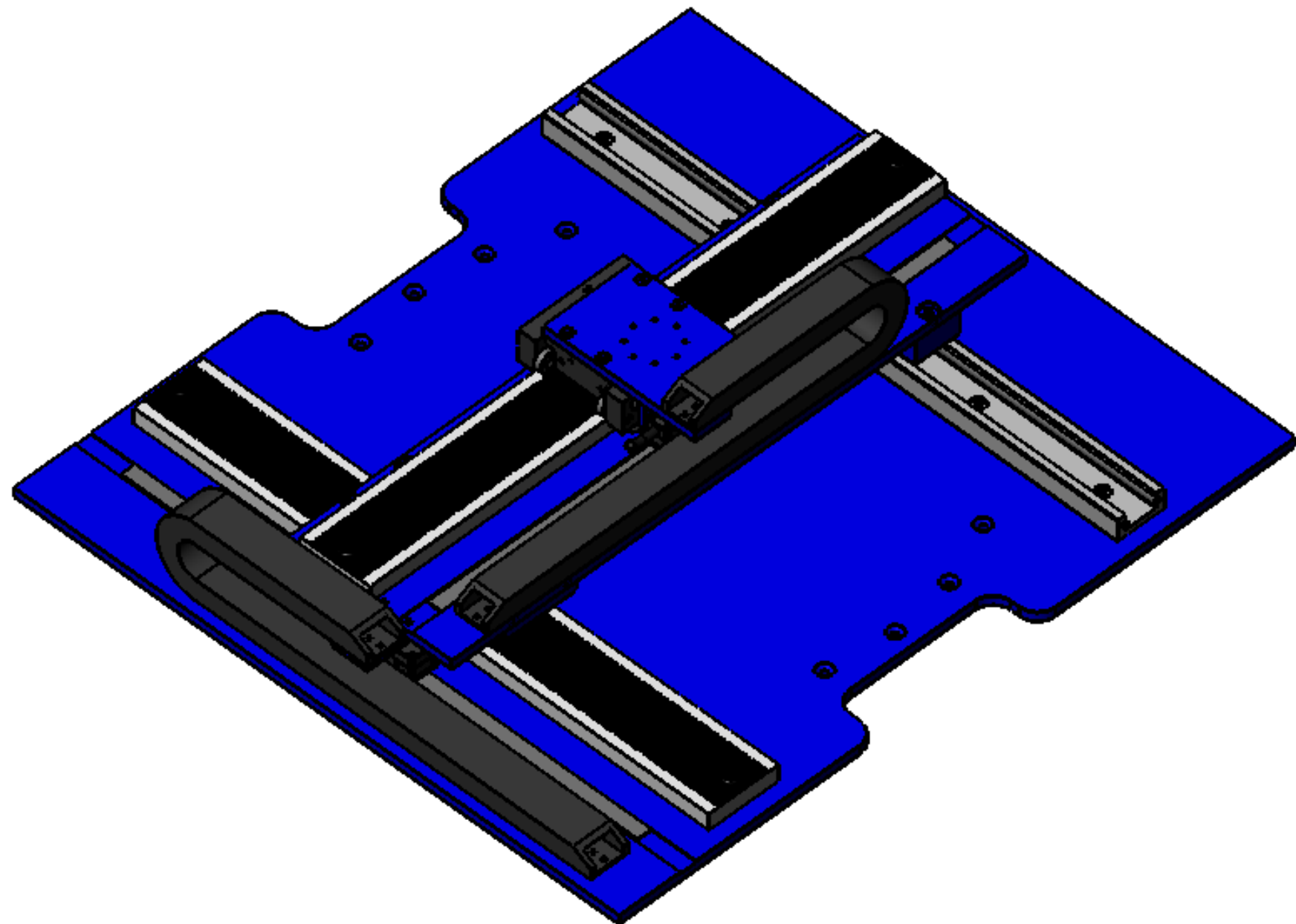
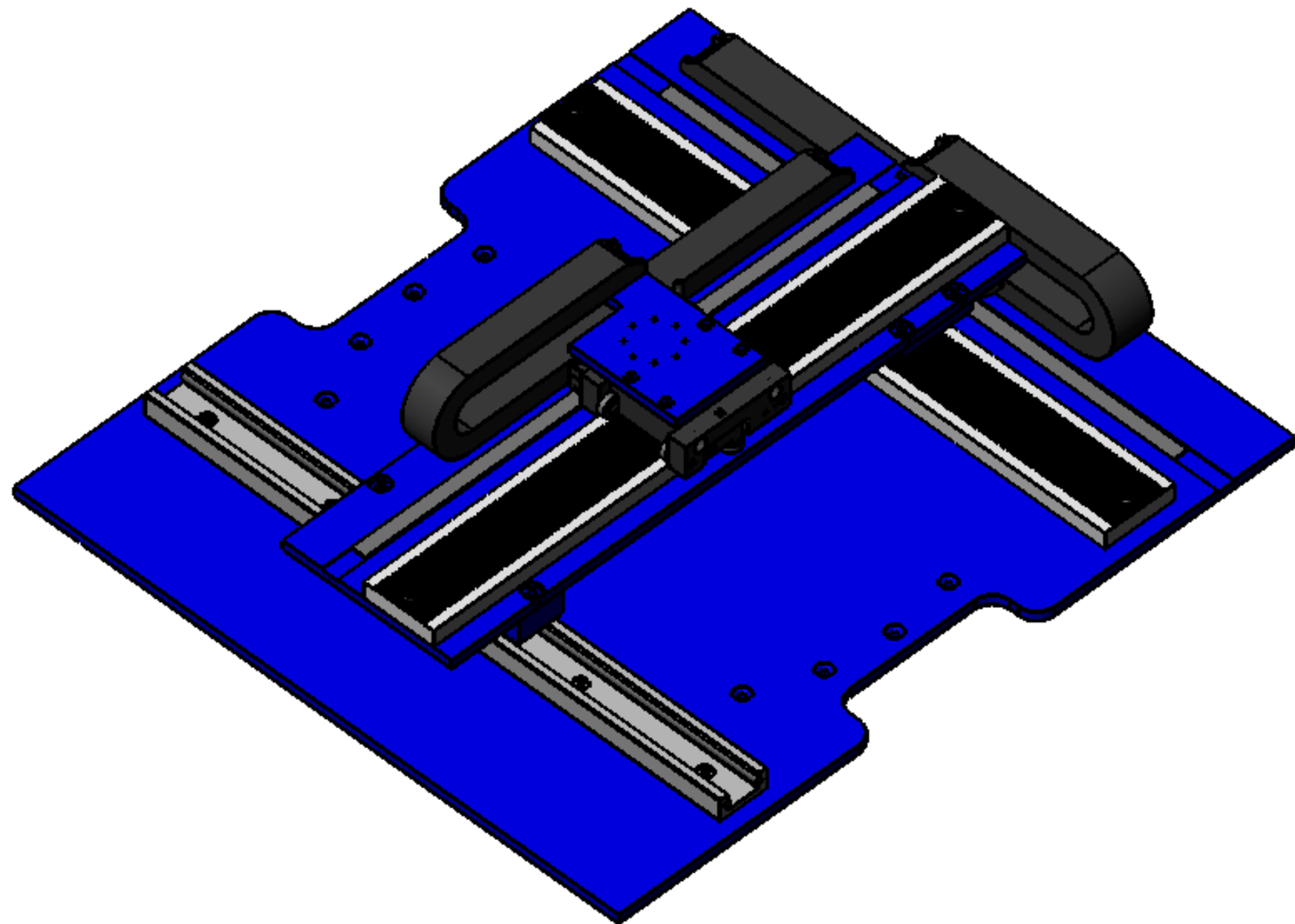
DETAIL B
 SCALE 2 : 1.5



NOTE:
 - All AXIS SHOWN AT MID-TRAVEL
 - X AND Y DIRECTIONS SYMMETRIC ABOUT B AND C DATUMS



UNLESS SPECIFIED OTHERWISE: <small>All dimensions are in inches. Standard Tolerances are as follows: XXX ±.005 ANGLES ±1° XX ±.010 FILLETS AND X ±.020 CORNERS 0.010 Remove All Burs and Sharp Edges</small>						MATERIAL		FINISH		TITLE	
DRAWN	DATE	APPROVED	DATE	DWG#	REV	SHEET					
SDC	2-2-16	MPW	2-2-16	10-0621	---	1 of 2	H2W Technologies, Inc. 26380 Perry Court - Santa Clarita, CA 91350 USA Tel: (661) 291-1620 Fax: (661) 291-1626 www.h2wtech.com LSS-012-12-060-XY-01A-M				



LINEAR STEPPER STAGE SPECIFICATIONS (Top Axis)		
Motor P/N	STS-0620-R	
Continuous Force	6.0 lbs	26.7 N
Stroke	12.5 in	318 mm
Encoder Resolution	1 Micron (Absolute)	
Rated Current	2.0 Amp	
Resistance/Phase @ 20C	2.40 ohms	
Inductance/Phase @ 20C	3.0 mH	
Motor Phases	2	
Bearing Type	Roller Bearing	
Nominal Airgap	0.0015"	
Moving Mass	0.85 lbs	.385 kg
Totas Mass	6.85 lbs	3.10 kg

LINEAR STEPPER STAGE SPECIFICATIONS (Bottom Axis)		
Motor P/N	STS-0620-R	
Continuous Force	6.0 lbs	26.7 N
Stroke	12.5 in	318 mm
Encoder Resolution	1 Micron (Absolute)	
Rated Current	2.0 Amp	
Resistance/Phase @ 20C	2.40 ohms	
Inductance/Phase @ 20C	3.0 mH	
Motor Phases	2	
Bearing Type	Roller Bearing	
Nominal Airgap	0.0015"	
Moving Mass	0.85 lbs	.385 kg
Totas Mass	14.5 lbs	6.58 kg

NOTE:
 - Electrical specs & masses are per individual axis
 - Total stage weight = 21.5 lbs (9.75 kg)